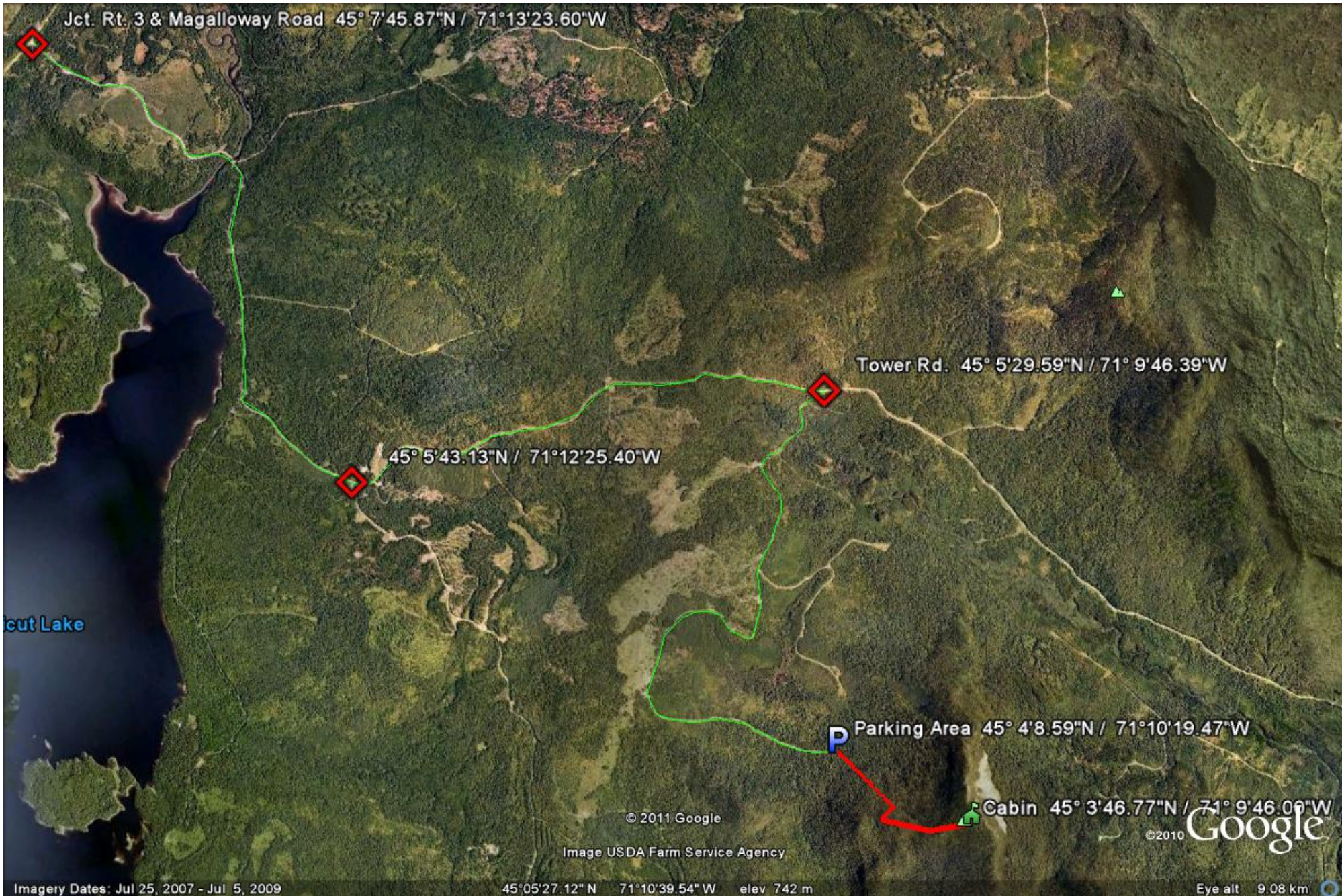
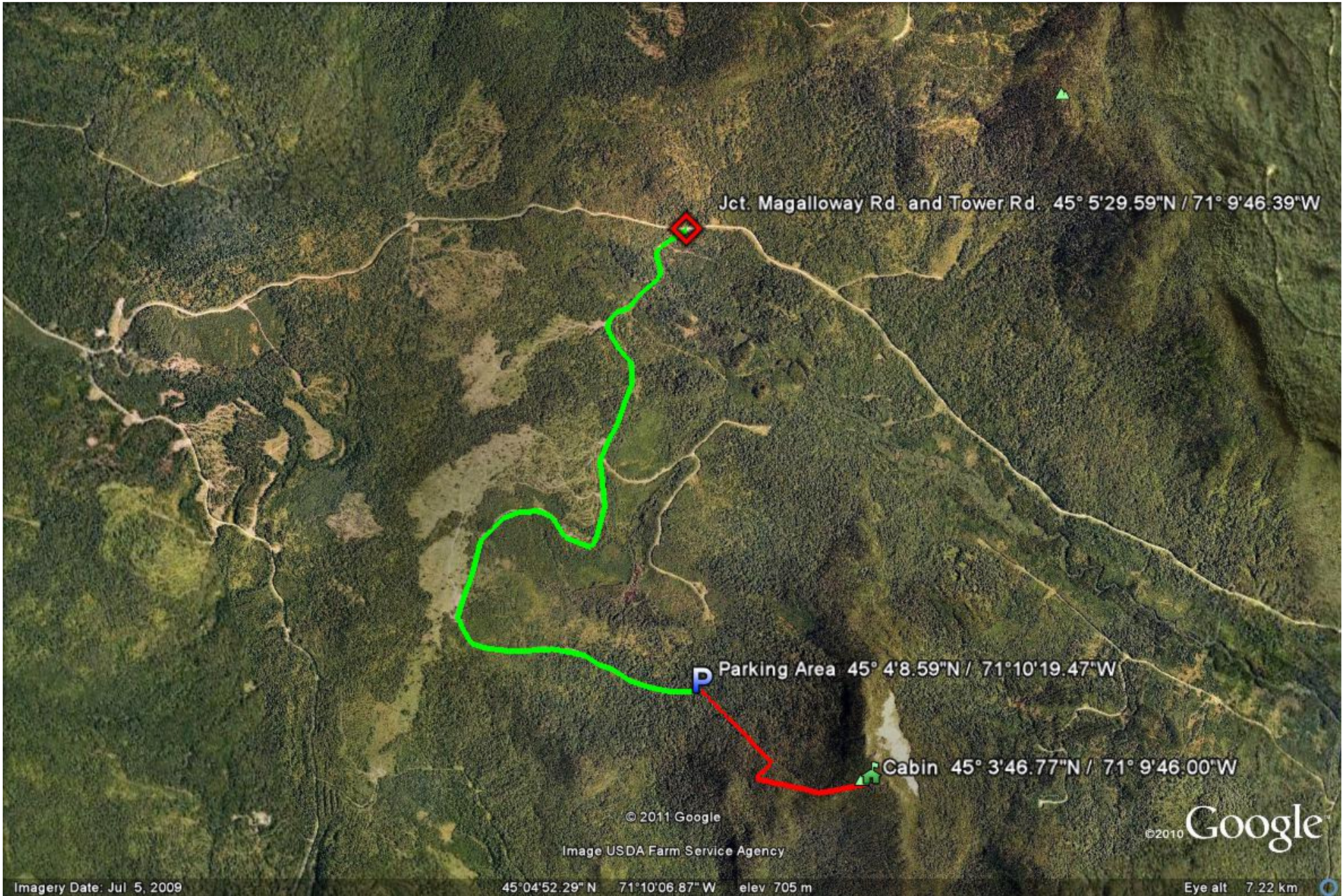


DIRECTIONS TO MAGALLOWAY FIRE TOWER

- Travel North on Route 3
- Approximately 4.7 miles north of the First Connecticut Lake Dam, Turn Right onto Magalloway Road
- There are several junctions which have signs to the Tower, Magalloway Road is the most traveled road in this area
- Approximately 5.3 miles from the Route 3 Junction, turn right onto the Tower Road
- Approximately 2.5 miles to the parking area
- There are 2 Trails:
 - Coot Trail, located at the end of the Parking Area is approximately 0.7 miles to the tower
 - Bobcat Trail, located approximately 50 yards back down the road is approximately 1.0 miles to the tower





Jct. Magalloway Rd. and Tower Rd. 45° 5'29.59"N / 71° 9'46.39"W

P Parking Area 45° 4'8.59"N / 71° 10'19.47"W

Cabin 45° 3'46.77"N / 71° 9'46.00"W

© 2011 Google

Image USDA Farm Service Agency

©2010 Google

Imagery Date: Jul 5, 2009

45°04'52.29" N 71°10'06.87" W elev 705 m

Eye alt 7.22 km

P Parking Area 45° 4'8.59"N / 71°10'19.47"W

Cabin 45° 3'46.77"N / 71° 9'46.00"W

© 2011 Google

Image USDA Farm Service Agency

©2010 Google

Imagery Date: Jul 5, 2009

45°03'55.36" N 71°10'01.63" W elev 921 m

Eye alt 4.51 km